

Sample Cooler

Models DHx-6 / DHx-12 / DHx-18



It's new...It's compact...It's more efficient...

The New Forbes Marshall DHx Sample Cooler has been designed to cater to meet sampling requirement of today's highly efficient high-pressure power plants. These coolers are compact yet more effective in terms of heat extraction capacity.

Features :

High efficiency :

Very close approach temperatures with minimal cooling water requirement.

No joints on the coil :

A complete single piece coil assures trouble free operations with no risks of failure of joints inside the shell.

Compact Size :

It's very compact compared with the service it is put to. The double helix coil design makes it's size almost half the size of conventional single helix designs. Available in three models, DHx-6 for lower heat duties & DHx-12/18 for higher heat duties.

Removable Shell :

Facilitates routine on-site maintenance easy. Coils can be cleaned in-place.

Shell relief valve :

Shell is protected with a built-in-Shell Relief Valve, thus preventing accidental pressure built-up inside the shell in case of failure

Pressure Regulator (optional) :

When the sample is at high pressure, it is recommended to use Forbes Marshall Pressure Regulator. The pressure regulator not only reduces sample pressure, but also regulates it, irrespective of upstream pressure fluctuations. This ensures operator safety.



Specifications for Sample Cooler :

Sample Coil :

■ Material	:	Stainless Steel ASTM A 213, TP 316
■ Design Pressure	:	250 Kg/Cm ²
■ Design Temperature	:	Maximum 560° C
■ Tube Size	:	1/4" OD, 20 SWG
■ Test Pressure (hydrostatic)	:	375 Kg/Cm ²

Shell :

■ Material	:	Stainless Steel ASTM A 240, TP 304
■ Design Pressure	:	10 Kg/Cm ²
■ Tube Size	:	360 mm OD (No ERW joints)
■ Test Pressure (hydrostatic)	:	15 Kg/Cm ²

End Connections :

■ Sample (Inlet / Outlet)	:	Double ferrule compression fittings for 1/4" OD Tube
■ Cooling Water (Inlet / Outlet)	:	1/2" NPT (F)
■ Shell Relief Valve	:	Double ferrule compression fittings for 1/4" OD Tube

Specifications for Sample Cooler :

Recommended Parameters for SWAS applications :

Cooling Water :

■ Temperature	:	Upto 36°C
■ Pressure	:	3.5 Kg/Cm ²
■ Quality	:	D.M. Water

Sample :

■ Temperature	:	Upto 560° C
■ Pressure	:	Upto 250 Kg/Cm ²
■ Quality	:	Ultra pure

Note : If some other quality of cooling water is to be used, pl check the chloride content in it. For higher chloride contents special models are available on request.

Ordering Information :

■ Model DHx-18	:	For sample cooler with 18 m sample coil
■ Model DHx-12	:	For sample cooler with 12 m sample coil
■ Model DHx-6	:	For sample cooler with 6 m sample coil

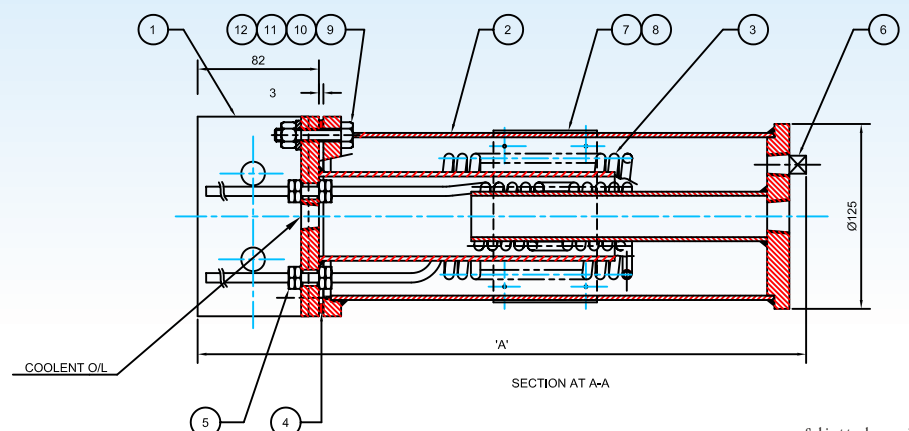
Please consult us for the sizing calculations for selecting appropriate sample cooler for your application.

S.NO.	DESCRIPTION	QTY.
1	TOP FLANGE ASSEMBLY	1
2	SHELL ASSEMBLY	1
3	SAMPLE COIL	1
4	GASKET	1
5	MALE CONNECTOR 1/4"OD	2
6	1/4" NPT PLUG	2
7	SPECIFICATION LABEL	1
8	HAMMER DRIVE RIVET NO.8	4
9	BOLT HEX HD M10x50L	4
10	NUT HEX HD M10	4
11	PLAIN WASHER M10	4
12	SPRING WASHER M10	4

SAMPLE INLET & OUTLET = TO SUIT 1/4" OD
COOLENT INLET & OUTLET - 1/2" NPT (F)

S. No.	Sample Cooler Model	A 'mm'
1	DHX-6	411 REF
2	DHX-12	411 REF
3	DHX-18	561 REF

SAMPLE COOLER ASSEMBLY



Subject to change without notice

Manufactured & Marketed by:

Forbes Marshall Ltd.

A-34/35, MIDC, Industrial Estate, 'H' Block, Pimpri, Pune - 411 018. India.

Tel.: 91(0)20 - 27442020 Fax: 91(0)20 - 27442040 E-mail: ask@forbesmarshall.com

Branches : Ahmedabad, Alibag, Bangalore, Bhopal, Chandigarh, Chennai, Coimbatore, Delhi, Hyderabad, Indore, Jamshedpur, Kolkata, Madurai, Mumbai, Nagpur, Navi Mumbai, Pune, Surat, Vadodara, Visakhapatnam

Area Representaives: Bhopal, Indore, Madurai, Pondicherry

Website : www.forbesmarshall-inc.com/swas

